



EDWARDS
X-RAY CORPORATION

COOLIDGE TUBE
DENTAL X-RAY UNITS

(PATENTED)

SAFETY without sacrifice of
Adjustability, Durability
or Efficiency



Ask for the EDWARDS new superordinary

Catalog — Booklet

“When is a Diagnosis not a Diagnosis?”



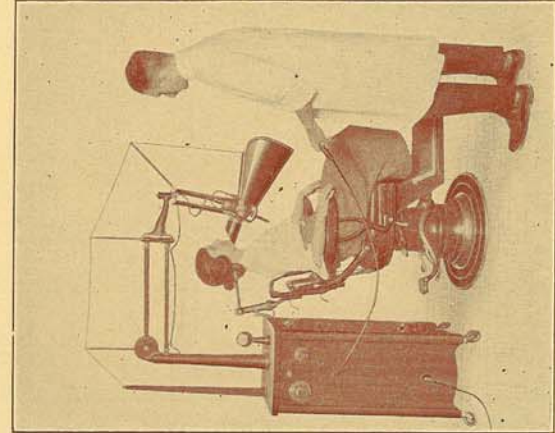
EDWARDS X-RAY CORPORATION,
 111-113 N. NEW JERSEY STREET,
 INDIANAPOLIS, IND.

Gentlemen:—

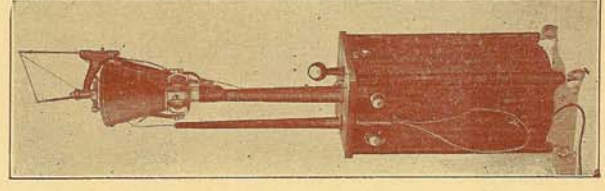
Without charge or obligation you may mail to me a copy of your new Catalog — Booklet, "When is a Diagnosis not a Diagnosis?"

Name -----
 Street and Number -----
 City or Town -----
 State -----
 My Dental Dealer is -----
 I have no x-ray machine -----
 I have a Coolidge tube -----
 I have a Gas tube -----
 x-ray machine. Model or Year? -----
 I am not considering the purchase of an x-ray machine.

EDWARDS MOBILE TUBE ARM MODEL
 (PATENTED)



CABINET GENUINE MAHOGANY.



FLOOR SPACE
 16X17 INCHES

Perfectly counterbalanced. Easily adjusted to and stands at any angle. No vibration. Completely equipped with High Voltage Guard. Automatic Time Switch, Automatic Resistance Cut-out, Voltage Regulator, Etc.

The EDWARDS is the original Over-the-Head Mobile Tube Arm machine and the only Dental X-Ray machine equipped with a HIGH VOLTAGE GUARD.

A Dental X-Ray machine with exposed, unguarded high voltage parts is electrically dangerous to operator and to patient.

All Dental X-Ray machines will be made safe eventually — EDWARDS machines are safe NOW.

There are 43,000 volts at the radiator end of a Coolidge Dental X-Ray tube, a fact that has caused fatal accidents and is very dangerous.

The position of tube relative to patient is the same in all makes of machines. If there is no guard to prevent, the patient might raise his hand a few inches and receive a fatal shock. This cannot happen with an EDWARDS machine.



THIS IS THE DANGER.



THIS IS HOW THE EDWARDS HIGH VOLTAGE
GUARD REMOVES THE DANGER.

EDWARDS SAFE - T - MODEL

(PATENTED)

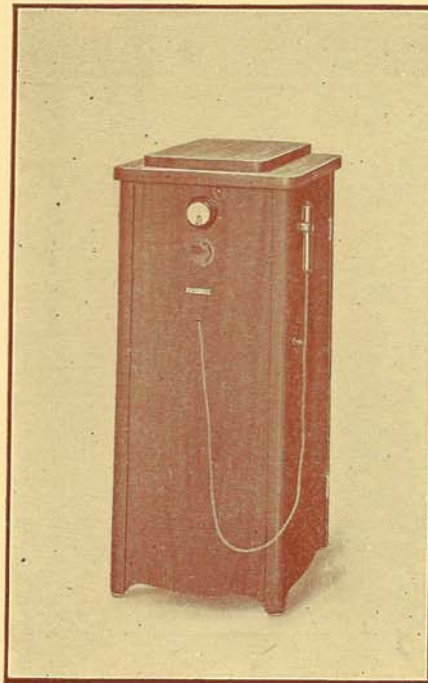


EASILY ADJUSTED TO ALL ANGLES.

PERFECTLY SAFE—No high voltage outside the cabinet. Tube enclosed in a heavy lead glass shield.

EFFICIENT—Power and penetration exactly the same as any right angle Coolidge tube dental x-ray machine regardless of price or make.

ADJUSTABILITY—Perfectly counterbalanced. Tube has 18 inches up and down travel and tilts to any angle.



FLOOR SPACE 18X20. CABINET GENUINE MAHOGANY OR QUARTER SAWED GOLDEN OAK.

The same Oil Immersed High Tension Transformer, Auto-Transformer, Filament Transformer and Rheostat, Automatic Resistance Cut-out, Voltage Regulator, etc. (with exception of Automatic Timer) used in the Mobile Tube Arm Model are used in the SAFE-T-MODEL. The lower price is made possible by simplicity plus quantity production.

Price: Complete with Coolidge Tube and Lead Glass Shield.

	MOBILE TUBE ARM MODEL	SAFE-T-MODEL
110 Volt, 60 Cycle, A.C.	\$775	\$595
110 Volt, 25 Cycle, A.C.	815	625
220 Volt, A.C.	815	625
110 Volt, D.C.	915	735
220 Volt, D.C.	955	775

General Electric Rotary Converter included with machines for Direct Current.

The above prices are for machines in standard finish. We are prepared to furnish machines in any special finish desired at a slight additional charge.